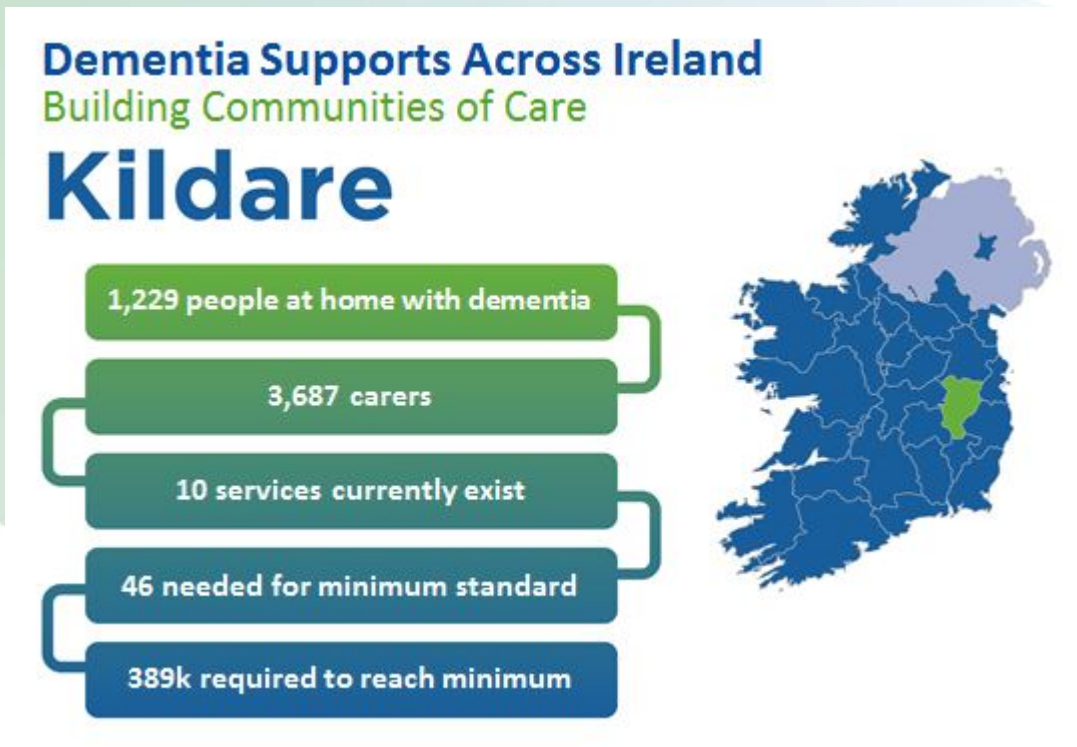




Dementia and Your Area

At ASI we mapped in conjunction with the HSE dementia-specific community services in Ireland¹. We found that no person with dementia in Ireland is living in an area with a basic minimum standard of care. This is what is needed in Kildare to ensure that people with dementia and carers have access to a basic minimum standard of community services.



People at home with dementia & carers	Existing dementia services	Services needed for minimum standard	Cost to reach minimum
1,229 people at home with dementia 3,687 carers	2 Alzheimer cafes 3 cognitive programmes + 5 other services	3 Alzheimer cafes 5 counselling services 6 carer programmes + 32 additional services	€389,355

Contact us:

- ✉ email: advocacy@alzheimer.ie
- 🌐 alzheimer.ie
- 📘 facebook.com/TheAlzheimerSocietyofIreland
- 🐦 twitter.com/alzheimerSocIrl
- 📞 National Helpline on 1800 341 341 is open six days a week Monday to Friday 10am–5pm & Saturday 10am–4pm





1

There are approximately 55,266ⁱⁱ people living with dementia in Ireland. This number is expected to increase significantly in the coming years; rising to 115,426 people by 2036.

2

The prevalence of dementia does increase with age, however it is not a normal part of the ageing process and there is a growing number of people who have younger-onset dementia; estimated to be 4,066 people under 65ⁱⁱⁱ.

3

The majority of people with dementia (63%^{iv}) live at home in the community, and this is their preference.

4

Most people living with dementia are cared for by a family member and there are approximately 50,000 dementia family carers in Ireland.

5

Dementia impacts every community and for every 1 person with the condition at least 3 others are significantly affected^v.

6

Ireland's first National Dementia Strategy (NDS) was published in 2014. There are six priority areas within the Strategy and across these six areas are 14 priority actions^{vi}. The Mid-Term Review of the Implementation of the NDS^{vii} has been published in May 2018.

About Dementia

Dementia is an umbrella term used to describe a range of conditions which causes changes and damage to the brain. These changes significantly affect a person's quality of life, changing their memory, thinking, communication and their ability to perform everyday tasks.

About The Alzheimer Society of Ireland

A national non-profit organisation, The Alzheimer Society of Ireland is person centred, rights-based and grassroots led with the voice of the person with dementia and their carer at its core.

ⁱDepartment of Health (2018) Dementia Specific Services in the Community: Mapping Public and Voluntary Services.

ⁱⁱPierce, M., Cahill, S. and O'Shea, E. (2014) *Prevalence and Projections of Dementia in Ireland, 2011-2046*. Dublin: Trinity College Dublin/NUI Galway/Genio.

ⁱⁱⁱIbid.

^{iv}Ibid.

^vCahill, S., O'Shea, E., Pierce, M. (2012) *Future Dementia Care in Ireland*. Trinity College.

^{vi}Department of Health (2014) *The Irish National Dementia Strategy*. <http://health.gov.ie/wp-content/uploads/2014/12/30115-National-Dementia-Strategy-Eng.pdf>

^{vii}Department of Health (2018) *Mid-term Review of the Implementation of the National Dementia Strategy*.

Contact us:

✉ email: advocacy@alzheimer.ie

🌐 alzheimer.ie

📘 [facebook.com/TheAlzheimerSocietyofIreland](https://www.facebook.com/TheAlzheimerSocietyofIreland)

🐦 twitter.com/alzheimerSocIrl

☎ National Helpline on 1800 341 341 is open six days a week
Monday to Friday 10am–5pm & Saturday 10am–4pm

