



THE ALZHEIMER  
SOCIETY *of* IRELAND

## PRE-BUDGET SUBMISSION 2017

# Dementia Care Begins at Home

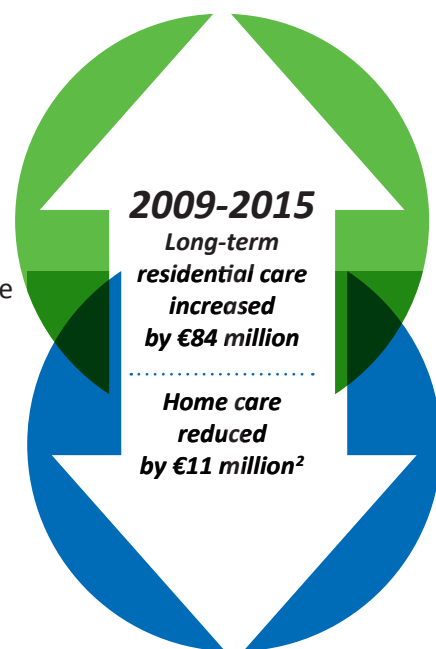
**Our Ask: Invest €67 million towards home care supports for people with dementia.**

**As a society we are channelling people with dementia into institutional care.**

Government policy is to support people to stay at home<sup>1</sup>, yet between 2009 and 2015 funding for long-term residential care has increased, while funding in home care has been cut. Also, people have a legal entitlement to long-term residential care, while no such entitlement exists for home care.

**It's time to look at home care in a new way.** Home care should not be seen simply as a solution to the hospital crises, but as an integral part of long-term care in its own right. Appropriate home care can keep people well in the community and out of hospital and long-term residential care. It is also vital in supporting family carers, who provide the vast majority of home-based care for people with dementia.





**People with dementia have the right to maintain their independence<sup>3</sup>** and the majority of people want to live at home, in a familiar environment and linked to their communities<sup>4</sup>. To do this, people with dementia need access to flexible, innovative care that reflects the complex and changing needs of the condition. Investment is needed and this must take the form of centralised, multi-annual funding for home care for people with dementia.



**What this investment will achieve for people with dementia:**

- 1** Meet the demand that exists for home care
- 2** Reduce unnecessary hospital admissions and the length of hospital stays for people with dementia
- 3** Avoid inappropriate, unnecessary or premature admission into long-term residential care
- 4** Reduce carer stress and support family carers

Contact us:

-  email: [advocacy@alzheimer.ie](mailto:advocacy@alzheimer.ie)
-  [alzheimer.ie](http://alzheimer.ie)
-  [facebook.com/TheAlzheimerSocietyofIreland](https://facebook.com/TheAlzheimerSocietyofIreland)
-  [twitter.com/alzheimerSocirl](https://twitter.com/alzheimerSocirl)

Alzheimer National Helpline 1800 341 341



THE ALZHEIMER  
SOCIETY *of* IRELAND

# Dementia Care Begins at Home

## The Figures

As a starting point, we are calling on Government to invest €67 million to meet the needs of 10% of people with dementia who live in the community.

This investment would provide home care supports for those in the early to mid-stages of dementia and enhanced packages for those with complex care needs. This initial investment must be built on year-on-year.

€67 million

## The Facts

- There are almost 55,000<sup>6</sup> people with dementia in Ireland and for every one person with dementia three others are directly affected<sup>7</sup>
- Most people with dementia live at home (63%<sup>8</sup>)
- For some the highest level of care will be required and long-term residential care is the right option
- But for the majority access to home care and support that provides protection, rehabilitation and support is essential
- The number of people with dementia will rise to 68,216<sup>9</sup> in the next ten years
- Ireland has the second highest proportion of people aged 65 and over resident in nursing homes and hospitals in Europe<sup>10</sup>

€36 million: Home care supports

– worth €500 per week, meeting the needs of 1,400 people

€31 million: Enhanced packages

– worth up to €1,000 per week, meeting the needs of 600 people<sup>5</sup>

1. Care for the Aged Report, 1968, Years Ahead report, 1988; National Positive Ageing Strategy, 2015; National Dementia Strategy, 2014; Future Health; Strategic Framework for Reform of the Health Service 2012-2015.
2. For references for these and other figures please download our full 2017 Pre-Budget Submission at [www.alzheimer.ie](http://www.alzheimer.ie) and see Donnelly, S., O'Brien, M., Begley, E. and Brennan, J. (2016). "I'd prefer to stay at home but I don't have a choice" Meeting Older People's Preference for Care: Policy, but what about practice? Dublin: University College Dublin.
3. Alzheimer Society of Ireland and the Irish Dementia Working Group (2016) *Charter of Rights for People with Dementia*. Dublin: Alzheimer Society of Ireland.
4. Alzheimer's Society (2011) *Support, Stay, Save Report*. UK: Alzheimer's Society.
5. Evidence suggests that 30% of people with dementia living in the community require high levels of care, on the cusp of entering long-term residential care. We therefore recommend that these packages are delivered to 600 of the 2,000 people targeted.
6. Pierce, M., Cahill, S. and O'Shea, E. (2014) *Prevalence and Projections of Dementia in Ireland, 2011-2046*. Dublin: Trinity College Dublin/NUIGalway/Genio.
7. Cahill, S. O'Shea, E. and Pierce, M. (2012) *Creating Excellence in Dementia Care Report*. Trinity College Dublin/NUIGalway.
8. Ibid.
9. Pierce, M., Cahill, S. and O'Shea, E. (2014) *Prevalence and Projections of Dementia in Ireland, 2011-2046*. Dublin: Trinity College Dublin/NUIG/Genio.
10. Drennan, J., Lafferty, A., Treacy, M.P., Fealy, G., Phelan, A., Lyons, I. and Hall, P. (2012) *Older People in Residential Care Settings: Results of a National Survey of Staff-Resident Interactions and Conflicts*. Dublin: National Centre for the Protection of Older People and University College Dublin.

About  
The Alzheimer  
Society of  
Ireland

A national non-profit organisation, The Alzheimer Society of Ireland is person centred, rights-based & grassroots led with the voice of the person with dementia and their carer at its core.

### Contact us:

- ✉ email: [advocacy@alzheimer.ie](mailto:advocacy@alzheimer.ie)
- 🌐 [alzheimer.ie](http://alzheimer.ie)
- 📘 [facebook.com/TheAlzheimerSocietyofIreland](https://www.facebook.com/TheAlzheimerSocietyofIreland)
- 🐦 [twitter.com/alzheimersocirl](https://twitter.com/alzheimersocirl)

Alzheimer National Helpline 1800 341 341



THE ALZHEIMER  
SOCIETY of IRELAND