



We are delighted to welcome you along to the Spring edition of your ASI Research Newsletter. It has been a busy start to 2022 with the launch of our new [Research Blog](#), a packed schedule of [Dementia Research Advisory Team](#) engagements and of course the ever-growing [TeamUp for Dementia Research](#) service.

Enjoy the catch-up below with a cup of something hot.

TeamUp for Dementia Research

The [TeamUp for Dementia Research](#) service launched in July 2021. From the outset it has been an incredibly active and varied service.

Already in the first quarter of 2022, we have offered our members 7 different research projects - from surveys to focus groups to one-to-one interviews.

If you have not yet matched with a study please do not be concerned. Our recently launched [Research Blog](#) covered the very important topic of "Inclusion & Exclusion Criteria" (ie, [how you are matched with a study](#)). It will only be a matter of time before a study relevant to your interest area comes up.

TeamUp
For Dementia Research
Connecting People and Research

500,000 people are affected by Dementia in Ireland, with 30 people diagnosed every day.

Do you want to have your voice heard in Dementia Research in Ireland?

To learn more:
visit: www.teamupfordementia.ie
email: teamup@alzheimer.ie
phone: 1800 341 341

DEMENTIA RESEARCH NETWORK IRELAND
Prevention, Care & Care for Neurodegenerative Diseases

THE ALZHEIMER SOCIETY OF IRELAND

Other Research Opportunities

Though the TeamUp service is dynamic and fast paced, it is still in its infancy - we cannot say yes to every research project. The Alzheimer Society of Ireland has long recognised that research is improved by having more people involved. We would therefore like to highlight some research opportunities (outside the scope of the TeamUp service) below. The contact details for the relevant researchers are included.

Non-verbal Communication

Dr. Aviva Cohen and her team in UCD have developed an innovative new app called Empathic. This unique app aims to help people who are no longer able to communicate verbally to independently communicate their emotions.

It uses artificial intelligence to interpret short recordings of non-verbal vocalisations.

Aviva and her team are now looking for people who fall into the above category, as well as with their formal and informal care providers, to trial the app.

For further information visit seamlesscare.ie or email Aviva@seamlesscare.ie



Children of People with Young Onset Dementia

Cathal Blake is completing his PhD through the School of Psychology in Dublin City University. The focus of much of his research work to date has been people affected by Young Onset Dementia.

Now moving into the next phase of his research, Cathal is looking to meet with children or young people across the three educational stages; primary school (from 7 years of age), secondary school and university, who live with (or have lived with) a parent diagnosed with young onset dementia.

If you would like to be involved in this important piece of research please contact Cathal on cathal.blake25@mail.dcu.ie



Research Opportunity



School of Psychology, Dublin City University

Study Title:

Childrens perspectives of parental young onset dementia



Who are we looking for?

We are looking for young people living with (or who have lived with) a parent diagnosed with young onset dementia.

Would you like to talk about your experiences?

What's involved?

An interview (**either online or in person**) lasting between 30-60 minutes with Cathal Blake (PhD student, School of Psychology, DCU.





For online interviews, you will need access to a device (e.g., a laptop or iPad) which has a camera and a microphone.

If you would like to know more, please contact the researcher at cathal.blake25@mail.dcu.ie

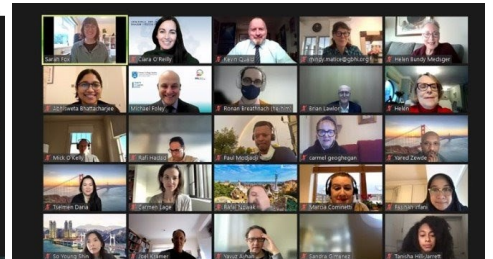
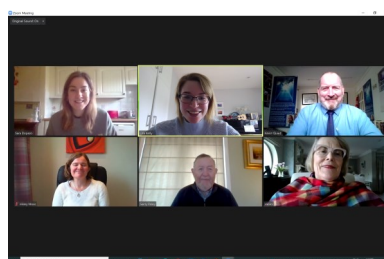
The Dementia Research Advisory Team

Members of the Dementia Research Advisory Team are internationally recognised for their contributions to research. They use their "lived experience" as people living with dementia and individuals with an experience of caring for someone affected by dementia to guide and advise the dementia research community.

The ASI's Research Team (Laura, Diane and Cíara) support the members to engage collectively in their own research, as well as to consult on no less than 13 other projects.

We are currently recruiting new members living with dementia to join the Dementia Research Advisory Team. You can take part from anywhere in the country and there is no experience necessary.

If you would like to learn more about the work of the Dementia Research Advisory Team please [click here](#) or email ciara.oreilly@alzheimer.ie



Important Upcoming Research



RESEARCH STUDY
YOUNG ONSET
DEMENTIA

Are you living with a diagnosis of young onset dementia?

We would love to hear from you.

We are conducting a study exploring the experiences of young onset dementia in Ireland. We aim to gather information on experiences of using community services, and suggestions for development of further community supports.

We are holding a series of focus groups with people living with younger onset dementia, and care partners.

Focus groups should last approx. one hour and will be held online. All information provided will be kept anonymous and confidential.

If you are interested, please contact Caroline to express your interest and to hear more about the study.

 **UCC**
University College Cork, Ireland
Coláiste na hOllscoile Corcaigh

caroline.kilty@ucc.ie / 085-764 1000
Centre for Gerontology and Rehabilitation
& School of Nursing and Midwifery, UCC.

Putting Research Into Practice

The Alzheimer Society of Ireland recognises the need to develop specific guidance on how Dementia Service Providers and Community Groups can support people with Young Onset Dementia living in their communities. This should be done either through the development of new services or the adaptation of current services.

This vital piece of work is being led by Dr. Siobhán Fox and Dr. Caroline Kilty from UCC, with the support and input of members of the Dementia Research Advisory Team and other expert panel members.

Opportunities to be a part of this work will soon be advertised through the [TeamUp for Dementia Research](#) service.

If you are not already a member of TeamUp but would like to be involved in this study please click on the link here: <https://alzheimer.ie/creating-change/research/teamup/register>